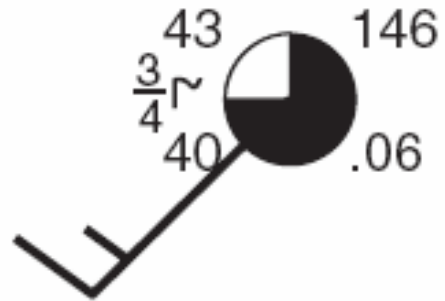


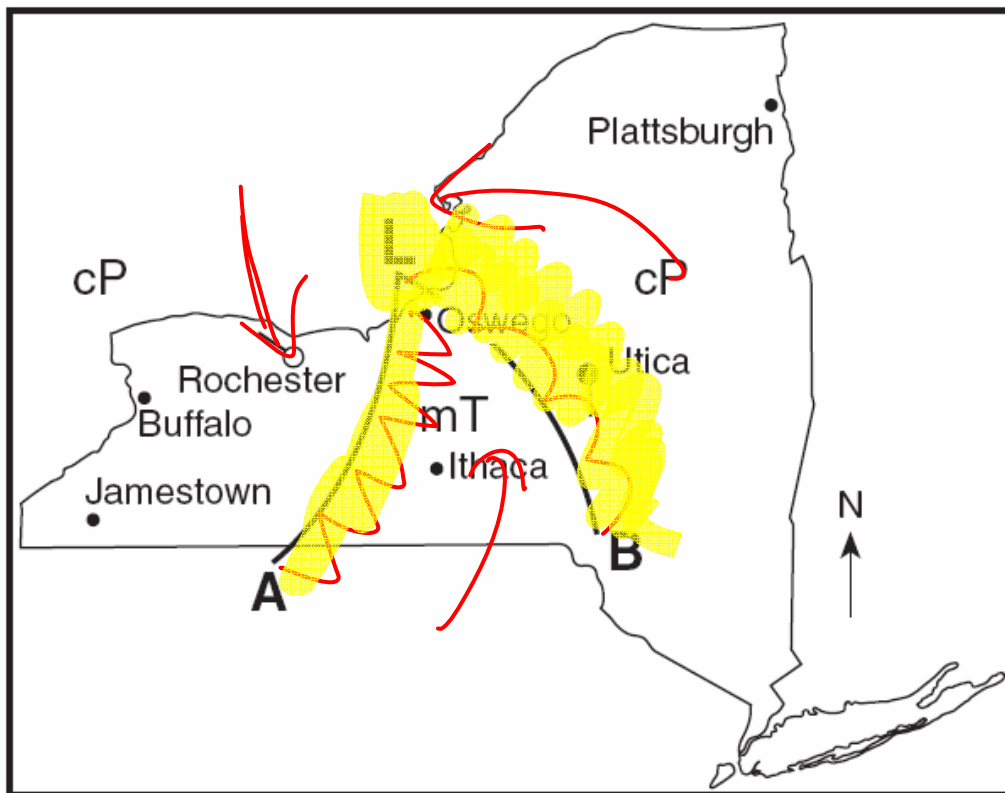
## Weather Review

1. Use the station model below to fill in the information.

Temperature **43° F**  
 Dew Point **40° F**  
 Cloud Cover **75%**  
 Air Pressure **1014.6 mb**  
 Wind Direction **SW**  
 Wind Speed **15 knots**  
 Precipitation **.06 in**  
 Visibility **3/4 mi**  
 Current Weather **Smog**



Use the following diagram to answer questions 2-6.



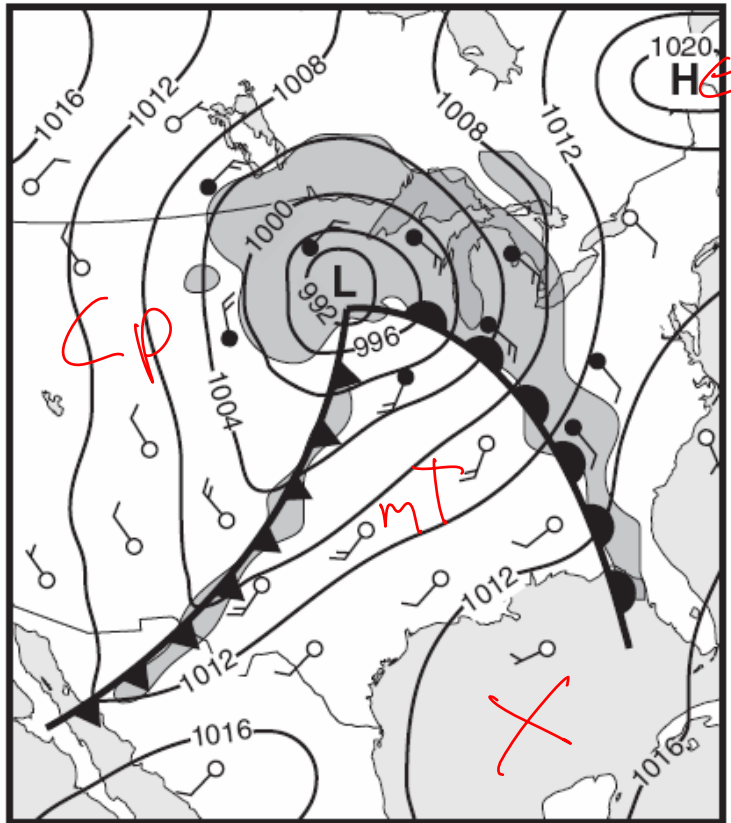
- Label the lines A and B with the correct frontal symbols.
- Label the low pressure with the correct wind arrows.
- Lightly shade the area that is receiving precipitation.
- What will happen to the temperature in Utica over the next several hours?
- Where did the air over Buffalo originate?

**get warmer**  
**Canada / continental polar**

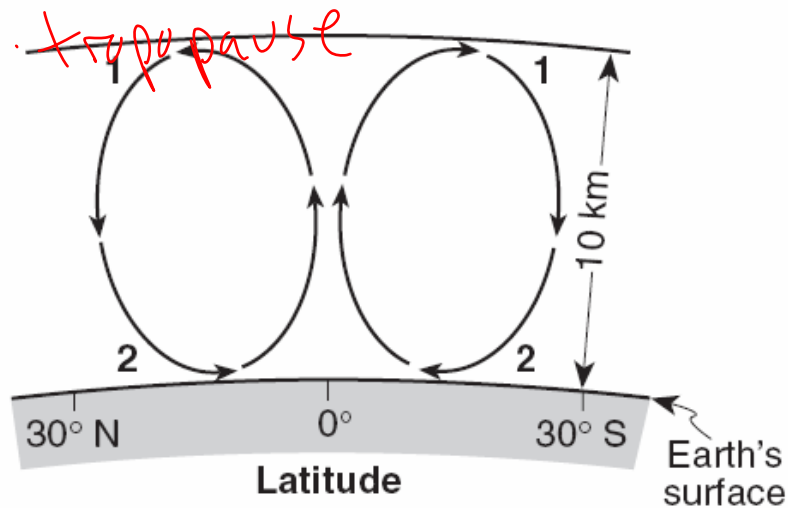
Use the following diagram to answer questions 7-11.

7. Label the continental polar air mass with a cP.
8. Label the maritime tropical air mass with mT.
9. Label the area with the calmest wind with an X.
10. What is the highest possible air pressure on the map.
11. Which general direction does the LOW pressure usually travel?

towards NE



Use the picture below to answer questions 12-14.

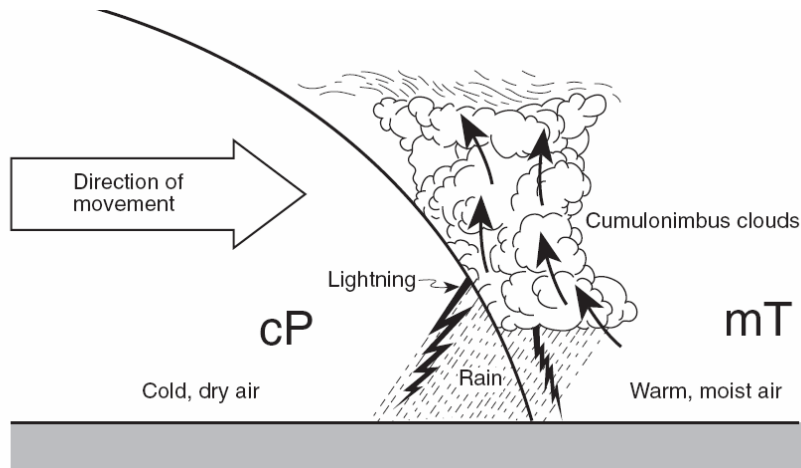


12. Which layer of the atmosphere does this picture take place?
13. What happens to the temperature, pressure and water vapor as you move from point 2 to point 1?

Troposphere  
less pressure / lower temp and water vapor

14. Label the tropopause.

Use the picture below to answer questions 15-17.



15. What kind of front is shown in the above diagram? *cold*

16. Describe the process that created the clouds in the diagram?  
*W A E C C C / condensation*

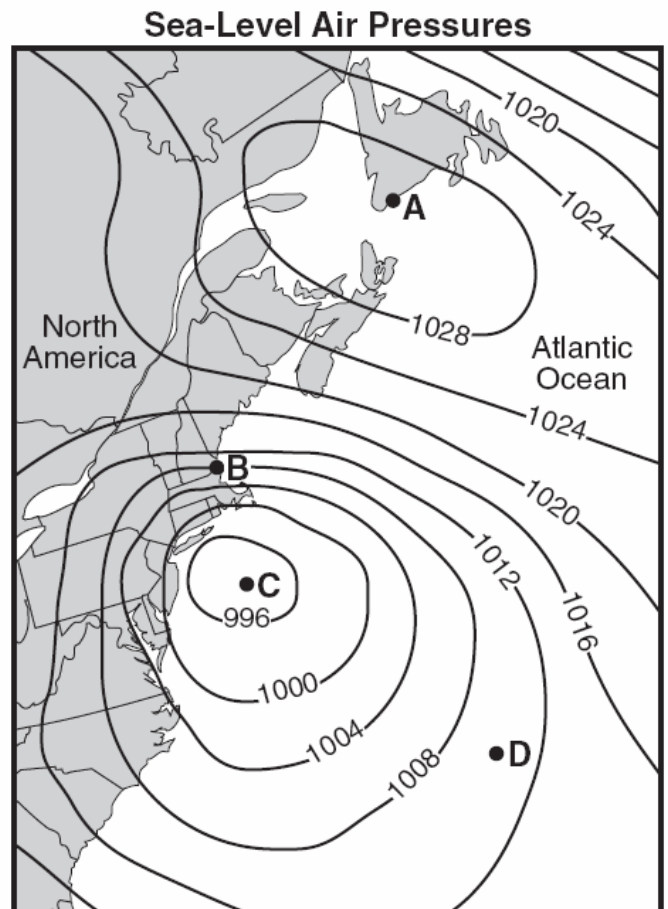
17. Which direction is this front probably moving?  
*to the right*

Use the diagram below to answer questions 18-20.

18. What type of pressure system is location A?  
*High*

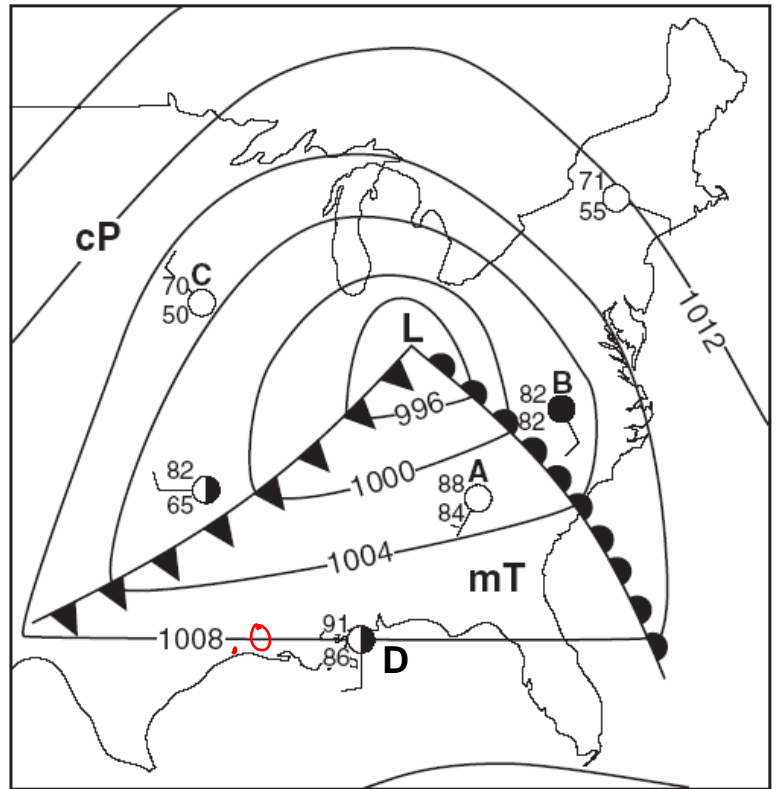
19. Which letter has the highest wind speed?  
*B*

20. What type of pressure system is location C?  
*Low*



Use the map to the right to answer questions 20-25.

- 21. What is the temperature at C? *70°F*
- 22. What is the cloud cover at A? *none*
- 23. What is the relative humidity at B? *100%*
- 24. What would the 3 number air pressure code for position D? *080*
- 25. What will happen to the temperature and The wind direction at location D over the next several hours?



*colder after front passes, wind will shift to N/NW*

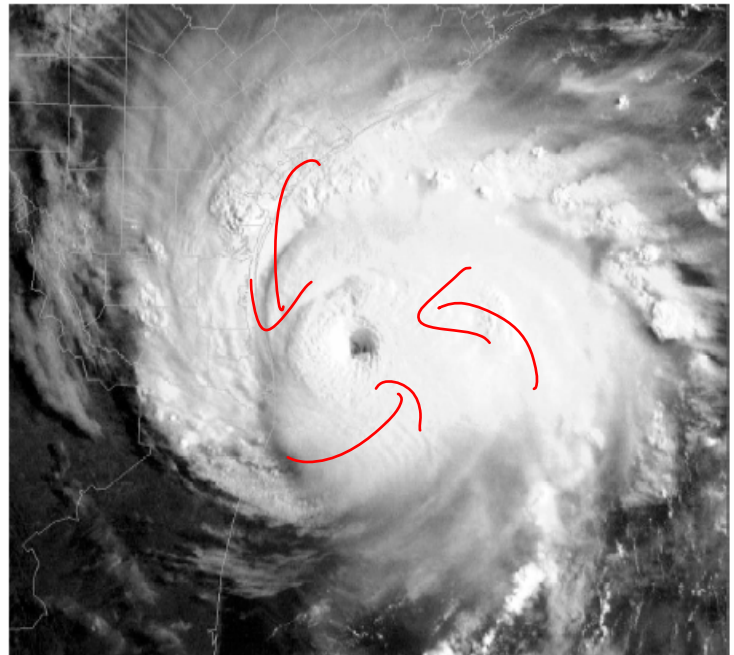
Use the picture to the right to answer questions 26-29.

- 26. What is the name of this type of storm?

*hurricane*

- 27. Use arrows to show the direction of wind flow around this LOW pressure system.

*counter clockwise & inward*



- 28. If this storm is in the Gulf of Mexico, name the air mass and describe its characteristics.

*mT / maritime tropical*

- 29. How can you prepare yourself and your family if this type of storm approaches?

*buy supplies / evacuate / go to higher ground*

Use the following table to answer questions 30-31.

Air temperature (dry-bulb temperature)	0°C
Relative humidity	81%
Present weather	snow

30. What is the wet-bulb temperature?

-1°C

31. What is the dew point?

-3°C

Use the graph below to answer questions 32-35.

32. What is the temperature at 6 pm?

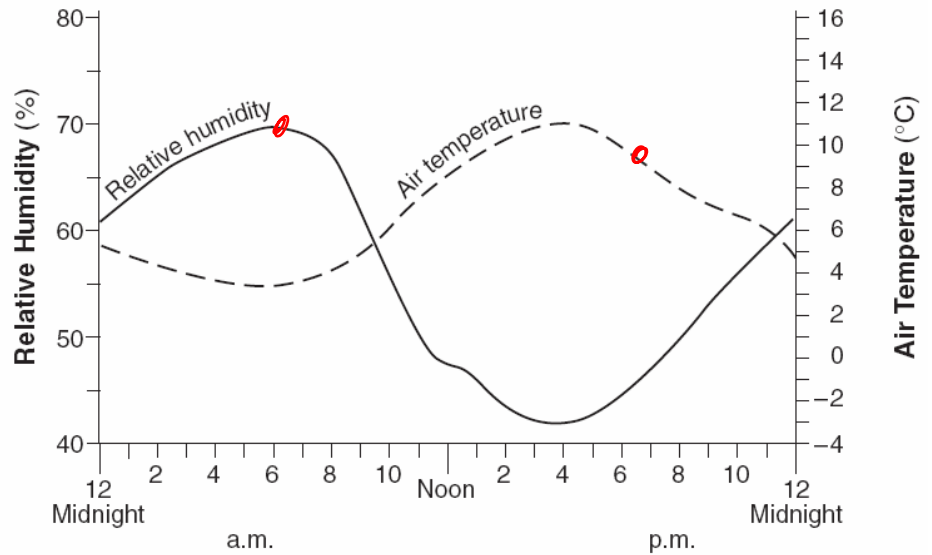
9°C

33. What is the relative humidity at 6 am?

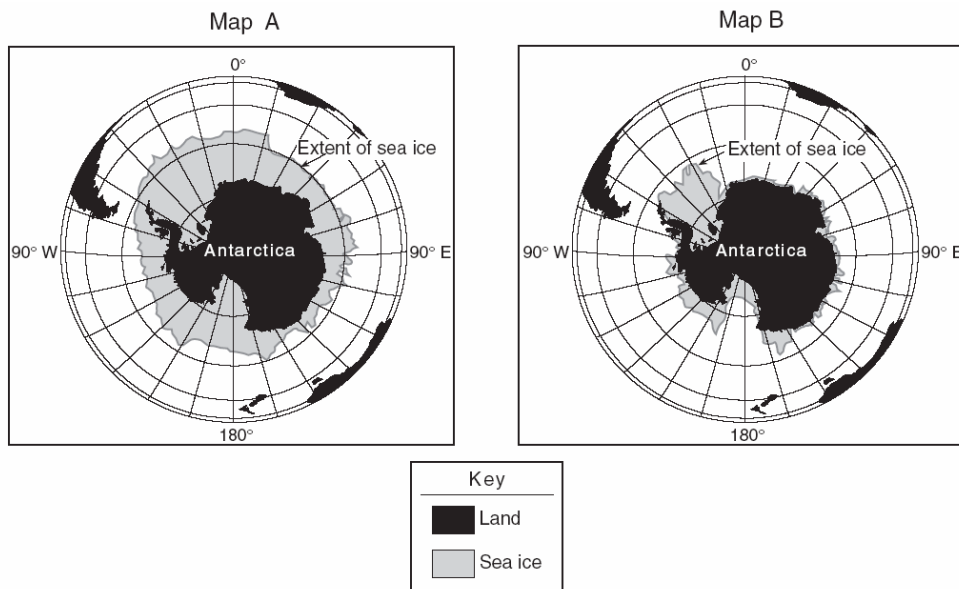
68%

34. What is the relationship between temperature and relative humidity?

indirect



Use the following diagram to answer questions 35-36.



35. What season is it on map A?

winter for them (June)

36. How many hours of daylight will Antarctica receive during this time?

0